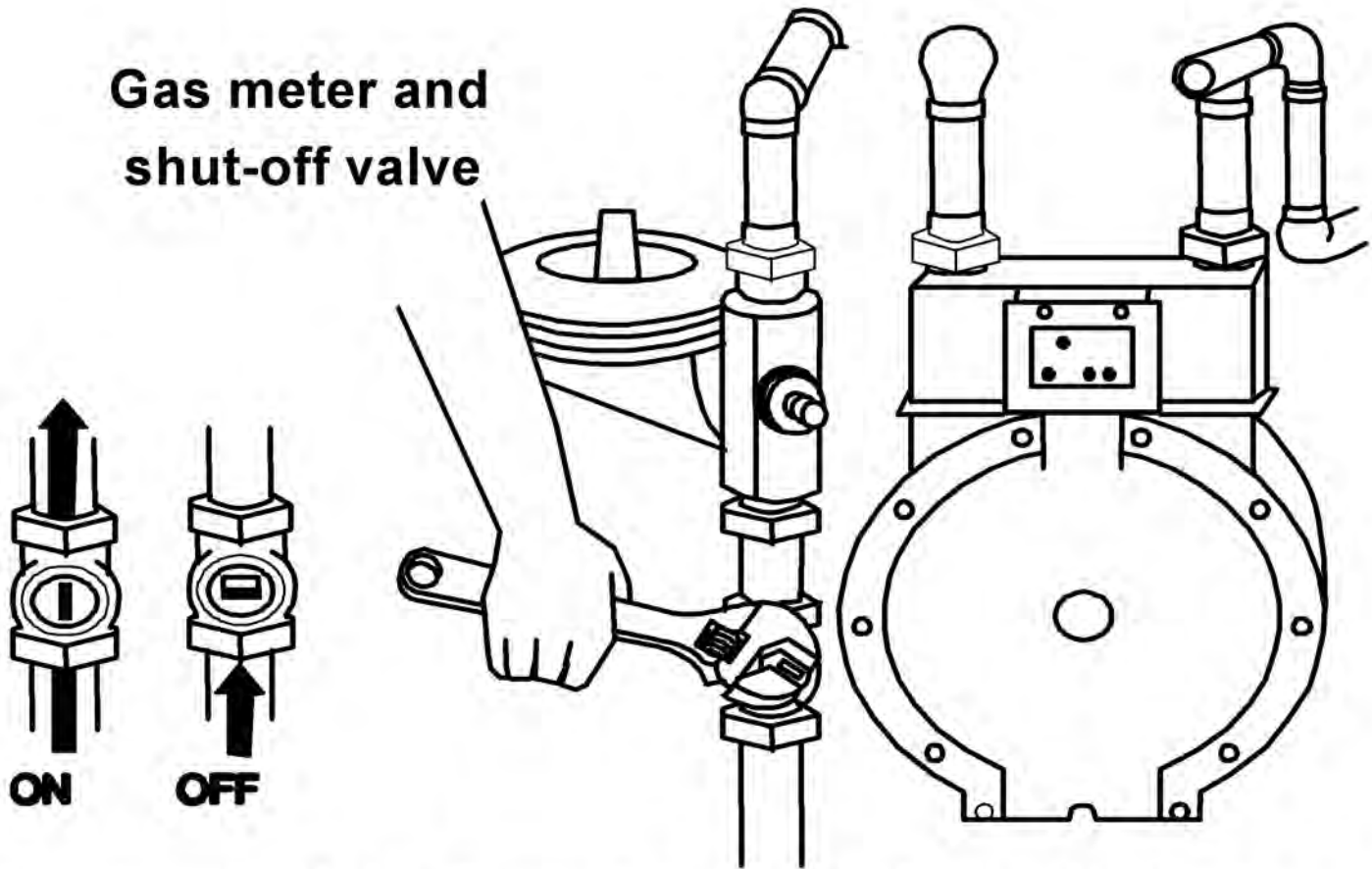


IT'S NOW CALIFORNIA LAW

All homes should install a carbon monoxide detector. Change your smoke alarm batteries twice a year with the "time change."



Gas meter and shut-off valve



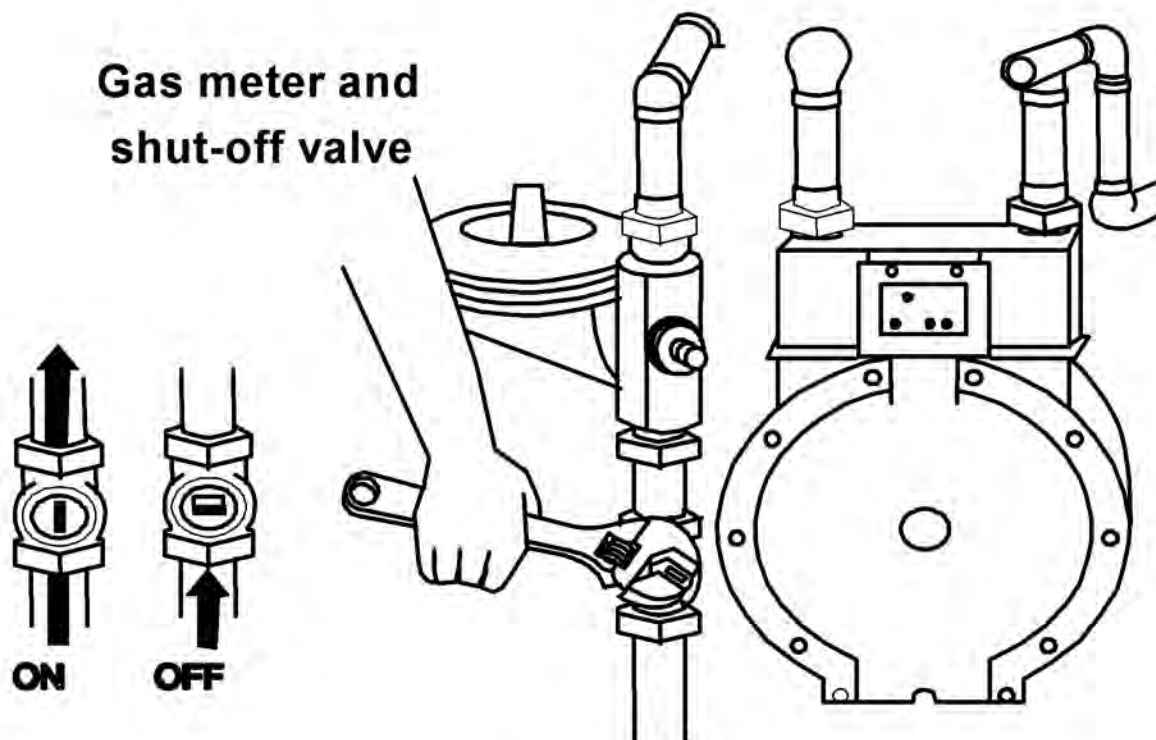
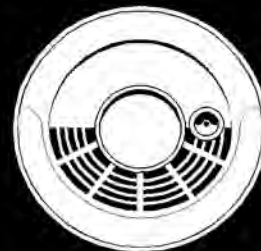
The gas meter shutoff diagram indicates the shutoff valve location on the pipe that comes out of the ground. To turn off the valve, use a non-sparking wrench to turn the valve clockwise one-quarter turn. Remember that, in all cases, natural gas flow should only be turned on by a licensed technician.

Please note: Some gas meters have automatic shutoff valves that restrict the flow of gas during an earthquake or other emergency. These are installed by a licensed plumber, downstream of the utility point of delivery. If you are unsure whether your home has this shutoff device, contact your gas service company. If this shutoff device is closed, only a qualified professional should restore it.

PLEASE TURN OVER

IT'S NOW CALIFORNIA LAW

All homes should install a carbon monoxide detector. Change your smoke alarm batteries twice a year with the "time change."



The gas meter shutoff diagram indicates the shutoff valve location on the pipe that comes out of the ground. To turn off the valve, use a non-sparking wrench to turn the valve clockwise one-quarter turn. Remember that, in all cases, natural gas flow should only be turned on by a licensed technician.

Please note: Some gas meters have automatic shutoff valves that restrict the flow of gas during an earthquake or other emergency. These are installed by a licensed plumber, downstream of the utility point of delivery. If you are unsure whether your home has this shutoff device, contact your gas service company. If this shutoff device is closed, only a qualified professional should restore it.

Interested in more CERT disaster preparation training?

Contact oceanside.cert@gmail.com

In the subject line type "Disaster Preparation Training"